

Designated Accommodation for Short-Term International Students

1. Name and Address

Male dormitory: Dormy Higashi-koganei 2 (ドーマー東小金井2)

Address: 2-6-30, Kajino-cho, Koganei-shi, Tokyo 184-0002, Japan

〒184-0002 東京都小金井市梶野町 2-6-30

The nearest station : Higashi-koganei station(JR Chuo-Line)

Telephone (Superintendent): +81-422-50-0290

Fax (Superintendent): +81-422-56-1911

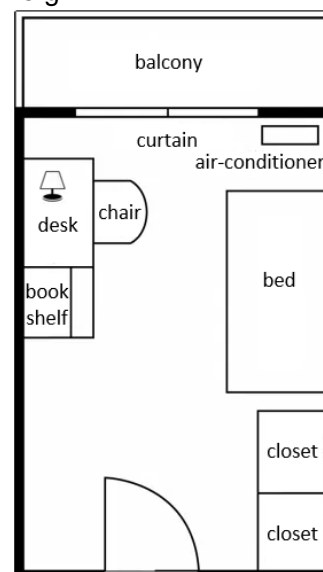
2. Common/Shared Facilities

Dining room, kitchen, public bath, washing machine,
Drying machine (paid), bike-parking lot, TV, microwave

3. Individual Facilities (in each room) Room size: approx. 13.77 m²

Air-conditioner, bed, desk, chair, lighting (room, desk),
Closet, bookshelf, Wi-Fi, TV-outlet,

e.g.



4. Fees (tax included)

1) Rent (administration fee included) 家賃

Exchange Student: 277,200 JPY / 6 months; 554,400 JPY / year

Visiting International students (Fee paying): 427,200 JPY / 6 months; 854,400 JPY / year

*Exchange student will be subsidized 25,000JPY/month for rent of Dormitory.

*Breakfast and evening meals are provided. (Except on Sundays and national holidays)

2) Bedding rental 寝具レンタル

12,980 JPY / 3 month, 18,920 JPY / 6 months, 30,800 JPY / year

3) Utilities (electricity, gas and water) 光熱水費 *Subsidized by Hosei University

4) Internet basic charge インターネット基本料金

3,960 JPY / month (Fixed monthly charge)

Costs may slightly vary according to the revised contract between Hosei University and the management company "Kyoritsu".

5. Commuting

About 60 minutes to our Ichigaya campus by train and walk.

(Students are responsible for commuting fee. It costs around 7,000 to 8,000 JPY a month)

定期券 : 1 ヶ月約 7,000 円~8,000 円

Higashi-koganei to Ichigaya by JR Line: 36 minutes.

JR 中央本線 東小金井⇄市ヶ谷 36 分

Dormy Higashi-koganei 2 Photo Gallery

< 外観 External appearance >



< 玄関 Entrance >



< 管理人室 Dorm manager's office >



< 食堂 Dining room >



< 食堂 Dining room >



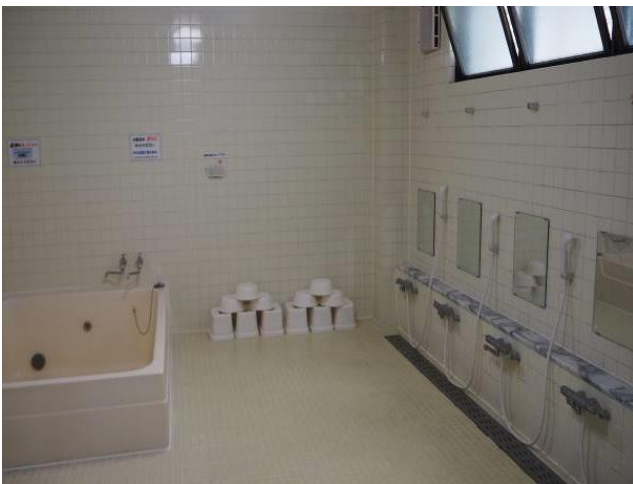
< キッチン Kitchen >



< ランドリー Laundry >



< 浴室 Public bath >



< 浴室内シャワー Shower room in public bath >



< 部屋 Room >

