



Welcome to Exchange Students from Overseas Program at

Hosei University

Facts and Figures

Founded in 1880

15 faculties and 38 departments

15 graduate schools and 32 courses

363 courses taught in English

41,000 students

900 international students

Student Exchange Partner Institutions 60 universities 20 countries

Selected for TOP GLOBAL UNIVERSITY project by Japanese Government



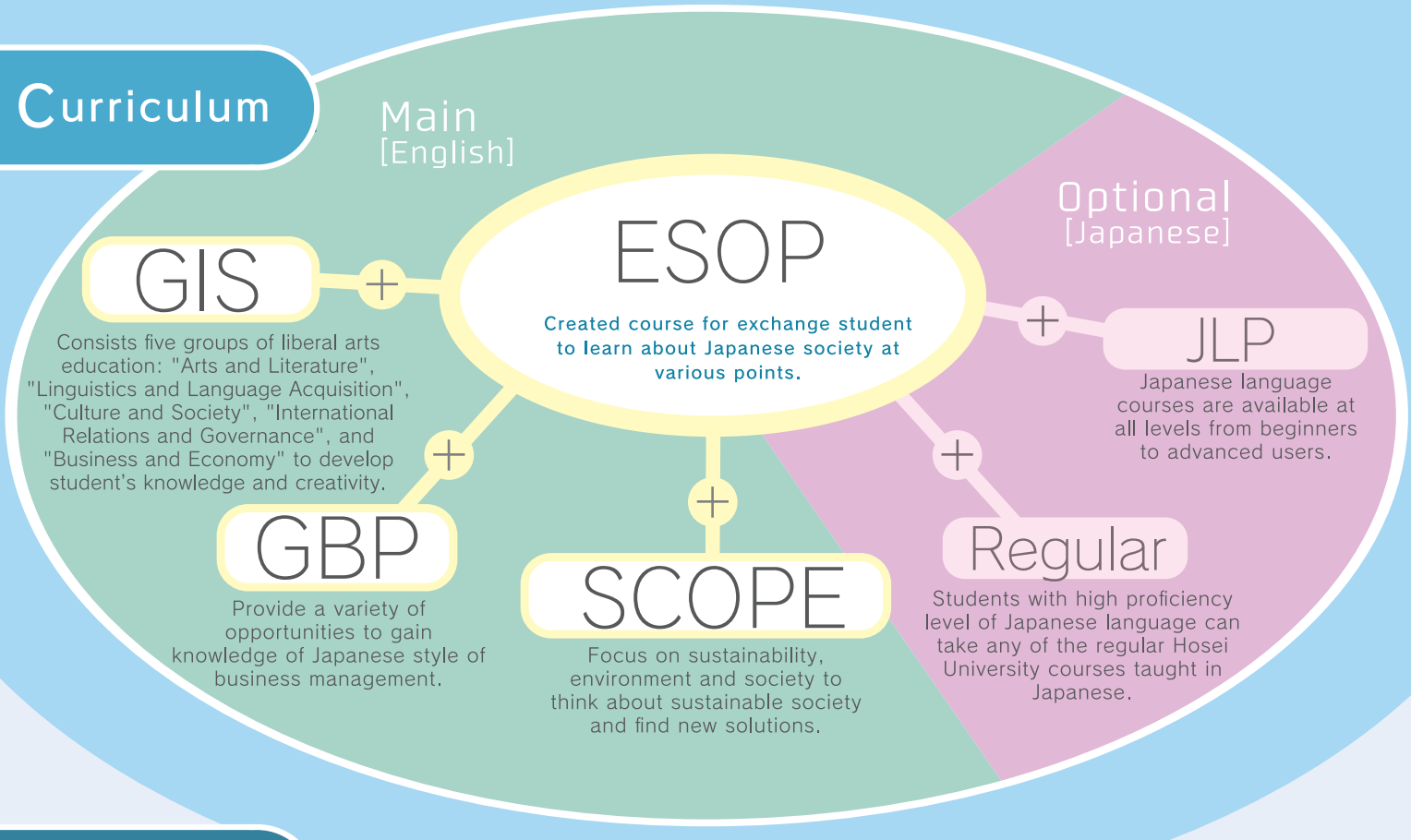
Location



✉ esop@ml.hosei.ac.jp
 🌐 <http://www.global.hosei.ac.jp/en>
 Global Education Center, Hosei University,
 2-17- 1 Fujimi, Chiyoda-ku, Tokyo 102-8160

Contact us

Curriculum



Student Support

Hosei University Global Education Center provides various types of support in the following areas to help exchange students to get the most out of their time as an exchange student in Japan.

- Welcome Guide** | Hosei students and office support airport pick-up service, opening of bank account, procedures at ward office, National Health Insurance, student wellness, scholarships etc.
- Language Buddy** | Exchange students are paired with Hosei students, enabling them to teach their native languages to each other.
- Japanese cultural experience** | Provide opportunity to communicate with Japanese high school students and many chances to participate in the event so that students can experience Japanese culture.
- Health care** | Clinic and counseling support on campus, Introduction of hospitals offering English services, Attendance to a clinic.
- Scholarships** | Hosei University covers some of the dormitory housing expenses as a scholarship. Those who have excellent grades are also eligible for the JASSO Scholarship of ¥80,000. Availability changes every year.

Student Dormitories



Dormitories are located about 40minutes by train from the University. Residents are provided with breakfast and dinner Monday-Saturdays. Students can enjoy living in the center of the Tokyo metropolitan area at an affordable cost.

Room	Private room for one persons
Individual Facilities (in each room)	<ul style="list-style-type: none"> • Air-conditioner • Bed • Desk • Chair • Lighting (Room, Desk) • Closet • Bookshelf • Internet (wired) • TV-outlet • IP-Telephone
Common/Shared Facilities	<ul style="list-style-type: none"> • Dining room • Kitchen • Bath • Shower (24hours) • Rooms laundry area • Bike-parking lot • TV
Dorm manager	24hours
Rent (per month)	About \$350

