



HOSEI Univ.  
<https://www.hosei.ac.jp/>



# 2023 HOSEI UNIVERSITY FACT BOOK



法政大学

# Continue to challenge conventions without fear of change

In 1880, Hosei University was founded with the power of youth in an era when the atmosphere aimed at freedom was at its height. Over the three centuries since its foundation, Hosei University has educated human resources in the culture of liberty and progress. Continue to challenge conventions without fear of change – Hosei University pursues continuous innovation instead of complacency as evidenced by its history and traditions.

## Culture of Hosei University **Liberty and Progress**

### I Root of the foundation of Hosei University

Tokyo Hogakusha (Tokyo School of Law) was born in 1880, when the penal code and criminal law were promulgated as forerunners of modern Japanese law. The Tokyo School of Law was established by Kanamaru Magane, Ito Osamu, and Satta Masakuni and other young lawyers in response to the trends of the time in Japan that saw a national upsurge in the movement for individual freedoms and ongoing development of the modern legal system. The school had both Kohokyoku, where lectures on law were given, and Daigenkyoku, where on-the-job training for lawyers was given. This shows that the spirit of on-the-job training and career education was present at the foundation of the school and has been its legacy to date.



**KANAMARU Magane**  
1852–1909



**ITO Osamu**  
1855–1920



**SATTA Masakuni**  
1856–1897

### I Wise men established the basis of our tradition and culture



established the foundation  
for modern Japanese law

**Gustave Emile BOISSONADE**  
1825–1910

Dr. Boissonade came to Japan from France as a legal advisor to the government of Japan. He became the director of the Tokyo School of Law in 1883 and laid the groundwork for the school by volunteering to teach students for ten years. The basic philosophy of modern law, similar to that of French natural law, was thus established by Dr. Boissonade, who formed the foundation for Hosei's culture of liberty and progress.



father of Japanese civil law

**UME Kenjiro**  
1860–1910

Dr. Ume Kenjiro, called the “father of civil law” in Japan, became the first president of Hosei in 1903. Dr. Ume promoted multi-faceted educational reforms from a global perspective, including the establishment of the Department of Expedited Law Training for Chinese students and the Department of Language Studies for language training in English, German, and French. This spirit of an open education has also been its legacy.

### I Dramatic development in the post-WWII period

After Ouchi Hyoe became the president in 1950, he reconstructed the school buildings that were destroyed in World War II. He constructed '53 Building (present Boissonade Tower), '55 Building, and '58 Building, and made substantial contributions to the dramatic development of Hosei University in the post-WWII period. Some policies of Ouchi in this support development period have been inherited, including *develop independent and free human resources* (signifying freedom in the Hosei culture) and *develop useful talents who take a concrete step, no matter how small, for improving and enhancing the social life of Japanese people, instead of asserting vain theories* (signifying progress in the Hosei culture).



**OUCHI Hyoe**  
1888–1980



A quotation from the Analects of Confucius, written by the former President Ouchi Hyoe, hangs over the front entrance of Ouchiyama Building: “Learning without thought is labor lost; thought without learning is perilous” (Volume 1, Book II, Wei Chang).

- 1880** Tokyo Hogakusha (Kohokyoku and Daigenkyoku) was founded by the non-governmental lawyers Kanamaru Magane and Ito Osamu in Surugadai, Tokyo.
- 1881** Kohokyoku spun off from Tokyo Hogakusha and became the Tokyo School of Law headed by Satta Masakuni.
- 1883** Dr. Boissonade, a professor (agregé) at the University of Paris, was invited as a legal advisor to the government of Japan and became the director of the Tokyo School of Law.
- 1886** Tokyo Futsu Gakko (Tokyo School of French Studies) was established by Futsugakkai (later Societe Franco-Japonaise).
- 1889** The Tokyo School of Law merged with the Tokyo School of French Studies and became Wafutsu Horitsu Gakko (Tokyo School of Japanese and French Law). Dr. MITSUKURI Rinsyo became the principal who advocated an academic culture based on freedom and innovation.
- 1903** Pursuant to the Vocational School Order, the Tokyo School of Japanese and French Law was renamed the Tokyo School of Japanese and French Law, Hosei University. Preliminary courses, undergraduate faculties, specialized courses, and graduate schools were established. Dr. Ume Kenjiro became the first president.
- 1915** The baseball team was established. The team joined the Big 4 Baseball League in 1917. The Tokyo Big 6 Baseball League was founded in 1925. The Hosei University Baseball Team won the Tokyo Big 6 Baseball League championship for the first time in the fall of 1930 and has since contributed to Japanese baseball as a prestigious team.
- 1920** Pursuant to the University Order, the establishment of private universities was authorized for the first time. The Tokyo School of Japanese and French Law, Hosei University, became Hosei University. The Faculty of Law and the Faculty of Economics were established. Hosei became one of the largest private universities in Japan with preliminary courses, specialized courses, and the Graduate Schools of Law and Economics.
- 1921** Hosei University moved to a new school building at 4-chome, Fujimicho, Kojimachi Ward (the present Ichigaya Campus).
- 1922** The Department of Letters and the Department of Philosophy were established in the Faculty of Law, and the name was changed to the Faculty of Law and Letters.
- 1944** Hosei University Aviation Industry Technical School was founded, the predecessor to the Faculty of Engineering.
- 1947** The Faculty of Law and Letters separated into the Faculty of Law and the Faculty of Letters. With the Faculty of Economics, Hosei University now had three faculties. Correspondence education started in July.
- 1949** In line with the School Education Law, Hosei University reorganized under the new university system.
- 1950** Ouchi Hyoe became the president. The Faculty of Engineering was established.
- 1951** Pursuant to the Private School Law, Hosei University became a legally recognized private university. Graduate schools were established under the new system.
- 1952** The Faculty of Social Sciences was established.
- 1959** The Faculty of Business Administration was established.
- 1962** The Hosei University scholarship system was established.
- 1964** Koganei Campus was completed, and the Faculty of Engineering moved to the new campus.
- 1977** The International Center (now the Global Education Center) was established.
- 1979** The scholarship study abroad system (now the dispatched study abroad system) started.
- 1980** Hosei University celebrated its 100th anniversary.
- 1984** Tama Campus was completed. Classes started for first-year students in the First Division, Faculty of Economics, and the First Division, Faculty of Social Sciences.
- 1992** '92 Building (Graduate School Building) was completed.
- 1999** The Faculty of Intercultural Communication and the Faculty of Humanity and Environment were established.
- 2000** The Faculty of Social Policy and Administration and the Faculty of Computer and Information Sciences were established. Boissonade Tower was completed on the Ichigaya Campus. Hosei University celebrated its 120th anniversary.
- 2003** The Faculty of Life-long Learning and Career Studies was established.
- 2007** The Faculty of Engineering and Design was established. Sotobori Building was completed.
- 2008** The Faculty of Science and Engineering, the Faculty of Bioscience and Applied Chemistry, and the Faculty of Global and Interdisciplinary Studies (GIS) were established.
- 2009** The Faculty of Sports and Health Studies was established.
- 2016** The Fujimi Gate was completed.
- 2019** Ouchiyama Building was completed.
- 2020** HOSEI Museum was completed at Ichigaya campus. HOSEI University has been established for 140 years.

## Hosei College Song

Words by Haruo Sato, music by Hidemaro Konoe

- 一、若きわれらが命のかぎり  
ここに捧げて (ああ) 愛する母校  
見はるかす窓 (の) 富士が峰の雪  
蜚集めむ門の外濠  
よき師よき友つどひ結び  
法政 おお わが母校  
法政 おお わが母校
- 二、若きわれらが命のかぎり  
ここに捧げて (ああ) 愛する母校  
われひと共にみとめたらずや  
進取の気象質実の風  
青年日本の代表者  
法政 おお わが母校  
法政 おお わが母校

## School colors



Hosei University's school colors are orange and deep blue (Hosei blue). According to an old cheering song, orange and Hosei blue respectively represent the sun at dawn and the blue sky. Hosei blue is a bluish purple, deeper than purple.

## Logo



This logo was determined in 2013. The "H" symbolically expresses the energetic roles of Hosei University in various fields. The design shows Hosei's power to continuously challenge conventions, the possibility and flexibility achieved through such challenges, and the resulting expansion.

## School badge



The present school badge was determined in 1930, conceptualized by Professor YAMAZAKI Seitaro of the preliminary courses (he was also a researcher and critic of Nogaku under the pseudonym Gakudo). The kanji characters "大" and "学" are designed into a young tortoise, symbolizing long tradition and permanent truth.

# List of Undergraduate Faculties and Graduate Schools

## ++ Undergraduate Faculties

Faculty	Department	Degree	Campus Location
Faculty of Law	Department of Law	Bachelor of Arts (Law)	Ichigaya
	Department of Politics	Bachelor of Arts (Politics)	
	Department of Global Politics	Bachelor of Arts (Global Politics)	
Faculty of Letters	Department of Philosophy	Bachelor of Arts (Philosophy)	Ichigaya
	Department of Japanese	Bachelor of Arts (Japanese Language and Literature)	
	Department of English	Bachelor of Arts (English)	
	Department of History	Bachelor of Arts (History)	
	Department of Geography	Bachelor of Arts (Geography)	
	Department of Psychology	Bachelor of Arts (Psychology)	
Faculty of Business Administration	Department of Business Administration	Bachelor of Arts (Business Administration)	Ichigaya
	Department of Business Strategy		
	Department of Markets and Management		
Faculty of Intercultural Communication	Department of Intercultural Communication	Bachelor of Arts (Intercultural Communication)	Ichigaya
Faculty of Sustainability Studies	Department of Sustainability Studies	Bachelor of Arts (Sustainability Studies)	Ichigaya
Faculty of Lifelong Learning and Career Studies	Department of Lifelong Learning and Career Studies	Bachelor of Arts (Lifelong Learning and Career Studies)	Ichigaya
Faculty of Engineering and Design	Department of Architecture	Bachelor of Engineering (Architecture)	Ichigaya
	Department of Civil and Environmental Engineering	Bachelor of Engineering (Civil and Environmental Engineering)	
	Department of Engineering and Design	Bachelor of Engineering (Engineering and Design)	
Faculty of Global and Interdisciplinary Studies	Department of Global and Interdisciplinary Studies	Bachelor of Arts (Liberal Studies)	Ichigaya
Faculty of Economics	Department of Economics	Bachelor of Arts (Economics)	Tama
	Department of International Economics		
	Department of Business Economics		
Faculty of Social Sciences	Department of Policy Science on Society	Bachelor of Arts (Social Sciences)	Tama
	Department of Sociology		
	Department of Media and Communication Studies		
Faculty of Social Policy and Administration	Department of Community Development	Bachelor of Arts (Social Policy)	Tama
	Department of Clinical Psychology	Bachelor of Arts (Clinical Psychology)	
Faculty of Sports and Health Studies	Department of Sports and Health Studies	Bachelor of Arts (Sports and Health)	Tama
Faculty of Computer and Information Sciences	Department of Computer Science	Bachelor of Science (Computer and Information Sciences)	Koganei
	Department of Digital Media		
Faculty of Science and Engineering	Department of Mechanical Engineering Course of Mechanical Engineering	Bachelor of Science and Engineering (Mechanical Engineering)	Koganei
	Department of Mechanical Engineering Course of Aviation Technology	Bachelor of Science and Engineering (Aviation Technology)	
	Department of Electrical and Electronic Engineering	Bachelor of Science and Engineering (Electrical and Electronic Engineering)	
	Department of Applied Informatics	Bachelor of Science and Engineering (Applied Informatics)	
	Department of Industrial and Systems Engineering	Bachelor of Science and Engineering (Industrial and Systems Engineering)	
	Department of Advanced Sciences	Bachelor of Science and Engineering (Advanced Sciences)	
Faculty of Bioscience and Applied Chemistry	Department of Frontier Bioscience	Bachelor of Bioscience (Frontier Bioscience) Bachelor of Bioscience (Clinical Plant Science)	Koganei
	Department of Chemical Science and Technology	Bachelor of Science (Chemical Science and Technology)	
	Department of Clinical Plant Science	Bachelor of Bioscience (Clinical Plant Science)	



## ++ Graduate Schools

schools/Institute	Majors	Degree		Campus Location
Graduate School of Humanities	Major in Philosophy	Master of Arts (Philosophy) / Master of Philosophy	Doctor of Philosophy (Philosophy)	Ichigaya
	Major in Japanese Literature	Master of Arts / Master of Philosophy	Doctor of Philosophy	
	Major in English Literature and Linguistics			
	Major in History	Master of Arts (History) / Master of Philosophy	Doctor of Philosophy (History)	
	Major in Geography	Master of Arts (Geography) / Master of Philosophy	Doctor of Philosophy (Geography)	
	Major in Psychology	Master of Arts (Psychology)	Doctor of Philosophy (Psychology)	
Graduate School of Intercultural Communication	Institute of International Japanese Studies	Master of Philosophy	Doctor of Philosophy	Ichigaya
	Major in Intercultural Communication	Master of Intercultural Communication	Doctor of Intercultural Communication / Doctor of Philosophy	
Graduate School of Economics	Major in Economics	Master of Economics	Ph.D. (Economics)	Ichigaya / Tama
Graduate School of Law	Major in Law	Master of Laws	Doctor of Laws	Ichigaya
Graduate School of Politics	Major in Politics	Master of Politics / Master of Arts / Master of Philosophy	Doctor of Politics / Doctor of Philosophy	Ichigaya
	Major in Global and Asian Politics	Master of Arts in Global and Asian Politics	-	
Graduate School of Sociology	Major in Sociology	Master of Sociology / Master of Philosophy	Doctor of Sociology / Doctor of Philosophy	Ichigaya / Tama
Graduate School of Business Administration	Major in Business Administration	Master of Business Administration	Ph.D. (Business Administration)	Ichigaya
Graduate School of Career Studies	Major in Career Studies	Master of Career Studies	-	Ichigaya
Graduate School of Public Policy and Social Governance	Major in Public Policy and Social Governance	Master of Social Governance / Master of Arts	Ph.D. in Social Governance	Ichigaya
	Major in Sustainability Studies	Master of Sustainability Studies	Ph.D. in Sustainability Studies	
Institute for Solidarity-based Society	Major in Solidarity-based Society	Master of Arts	-	Ichigaya
Graduate School of Science and Engineering	Major in Mechanical Engineering	Master of Engineering (Mechanical Engineering)	Doctor of Engineering	Koganei
	Major in Electrical and Electronic Engineering	Master of Engineering (Electrical and Electronic Engineering)		
	Major in Applied Informatics	Master of Engineering (Applied Informatics)		
	Major in Systems Engineering	Master of Engineering (Systems Engineering)		
	Major in Applied Chemistry	Master of Science (Applied Chemistry)	Doctor of Science	
	Major in Frontier Bioscience	Master of Bioscience (Frontier Bioscience)	Doctor of Bioscience (Frontier Bioscience) / Doctor of Bioscience (Clinical Plant Science)	
Graduate School of Social Well-being Studies	Major in Social Policy and Community Development	Master of Social Policy / Master of Arts	-	Tama
	Major in Clinical Psychology	Master of Clinical Psychology	-	
	Major in Social Policy, Community Development, Clinical Psychology	-	Ph.D. Social Policy, Community Development, Clinical Psychology	
Graduate School of Sports and Health Studies	Major in Sports and Health Studies	Master of Sports and Health Studies	Ph.D. in Sports and Health studies	Tama
Graduate School of Computer and Information Sciences	Major in Computer and Information Sciences	Master of Science (Computer and Information Sciences)	Doctor of Science (Computer and Information Sciences)	Koganei
Graduate School of Regional Policy Design	Major in Regional Policy Design	Master of Policy, Planning, and Development	Ph.D. Policy, Planning, and Development / Doctor of Philosophy	Ichigaya
Graduate School of Engineering and Design	Major in Architecture	Master of Engineering (Architecture)	Doctor of Engineering	Ichigaya
	Major in Civil and Environmental Engineering	Master of Engineering (Civil and Environmental Engineering)		
	Major in Engineering and Design	Master of Engineering (Engineering and Design)		

## ++ Professional Schools

Law School	Major in Law	-	Juris Doctor	Ichigaya
Business School of Innovation Management	Major in Innovation Management	Master of Business Administration	-	Ichigaya
		Master of Business Information Technology		
		Master of Business Administration in Management Information		
		Master of Business Administration in Accounting		

# Research Institutes

## Advanced special research and study institutes have made numerous achievements

Hosei University has affiliated research institutes in a variety of different fields, and those institutes have made numerous achievements. The achievements in research and study activities at those institutes are presented at academic conferences, symposiums and lectures, or published as reports.

### Ohara Institute for Social Research

The Ohara Institute for Social Research, founded in 1919, is one of the oldest research institutes in the fields of social science in Japan. The Institute took its name from its founder, Magosaburo OHARA, a business magnate from Kurashiki, Okayama Prefecture. In 1949, the institute became affiliated with Hosei University. <https://oisr-org.ws.hosei.ac.jp/english/>

### The Research Center for Computing and Multimedia Studies

The Research Center for Computing and Multimedia Studies promotes the advancement of education and research in the field of multimedia infrastructure, while seeking new ways to harness information technology. To that end it conducts research and development on large-scale information systems and multimedia educational systems, and supports planning, design, and implementation of multimedia-based educational programs and related functions. <https://www.hosei.ac.jp/media/> (Japanese pages only)

### Sports Research Center

The Center, which was established to promote sports, explores new research areas, such as integration of gymnastics and sports, health science, and welfare engineering. A training room has been opened at the gymnasiums in the Ichigaya, Tama, and Koganei campuses. The center holds extension classes and lectures as an initiative to promote sports. <https://www.hosei.ac.jp/rpes/> (Japanese pages only)

### The Nogami Memorial Noh Theater Research Institute

The Nogami Memorial Noh Theater Research Institute was established in April 1952 to commemorate the achievements of former Hosei University President Dr. NOGAMI Toyochiro, who was a student of NATSUME Soseki and a scholar of English Literature, developed new aspects of research into Noh theater. The Institute puts much efforts into researching and collecting materials related to Noh theater, mainly in the form of old documents found all over Japan. Since the Institute was established, it has collected over 40,000 items, including rare and extremely valuable manuscripts dating from the Muromachi and the Edo eras. [http://nohken.ws.hosei.ac.jp/index\\_en.html](http://nohken.ws.hosei.ac.jp/index_en.html)

### Institute of Comparative Economic Studies

The Japanese economy has recently experienced a rapid "internationalization" in various aspects and a number of problems have occurred as a result. The Institute of Comparative Economic Studies was established in order to investigate these problems from an international point of view. The main survey fields of the Institute are international economic relations, especially between Japan and east/south-east Asian countries, as well as between Japan and other industrialized nations. <https://www.hosei.ac.jp/ices/> (Japanese pages only)

### Center for Regional Research

Recently, communities have been urged to increase their independence and autonomy. The objectives of the Center for Regional Research are not only regional research and education, but also the provision and dissemination of the knowledge and information that Hosei University has accumulated. Therefore, the Center functions as an interface that facilitates communication between Hosei University and municipalities, businesses, local communities, NPOs, NGOs, and governmental organizations.

### Research Center for Micro-Nano Technology

Nanotechnology is one of the new technologies that have shown possibilities to overcome the limits of conventional technologies. Many research centers around the world have been actively engaged in the development of nanotechnology. [https://www.hosei.ac.jp/nano\\_e/](https://www.hosei.ac.jp/nano_e/)

### Laboratory of Regional Design with Ecology

The purpose of our research center is to study methods for true "revitalization of cities and regions" to open up the era of the environment. In particular, we set our sights on regeneration of waterfront spaces, unfortunately labeled as a negative legacy of the 20th century; despite their long history of fostering rich environments, we regard them as an important pillar for urban and regional planning in the 21st century. <http://eco-history.ws.hosei.ac.jp/> (Japanese pages only)

### Research Center of Ion Beam Technology

Research Center of Ion Beam Technology was established in 1980 to commemorate the centenary of Hosei University. This Institute has been working on surface characterization, modification and synthesis of solid state materials such as semiconductor and novel materials using several million electron-volt protons, alpha particles and other atomic ion beam. [https://www.hosei.ac.jp/ionbeam\\_e/](https://www.hosei.ac.jp/ionbeam_e/)

### Institute of Okinawan Studies

This Institute was established in 1972 to do comparative research on the culture, history and linguistics of not only the Ryukyu islands, centered on Okinawa, but also of surrounding areas such as China, Southeast Asia and Korea. Now that the Institute of Okinawan studies has expanded into a world-wide concern, the Institute is playing a central role in proving and exchanging information among the researchers within and outside Japan. <https://www.hosei.ac.jp/okiken/> (Japanese pages only)

### Boissonade Institute of Modern Law and Politics

This Institute was established in 1977 in memory of Dr. Gustave Boissonade, who is known as the father of modern law in Japan and who contributed much to Hosei University during its formative period. The Institute has two principal objects. One is to collect and research materials concerning Boissonade that would otherwise be scattered and forgotten. The other is to make an interdisciplinary approach to several complicated legal phenomena in modern society that could no longer be analyzed with conventional legal approaches. <https://www.hosei.ac.jp/gendai-hou/> (Japanese pages only)

### Japan Statistics Research Institute

This Institute was founded in 1946 with former Hosei University president Dr. OUCHI Hyoe as its head. It is now located at Tama Campus and is known as an unique research institute in Japan with outstanding achievements in many fields. Its main task is research activity on statistical systems and policies of foreign and domestic governments and organizations, on the theory of statistics, and on regional statistics. Research is carried out mainly by the academic staff of Hosei University in cooperation with specialists from outside including the governmental staff. [https://www.hosei.ac.jp/toukei\\_e/](https://www.hosei.ac.jp/toukei_e/)

### The Research Institute for Innovation Management

The predecessor of the Research Institute for Innovation Management was the Center for Business and Industrial Research, established in 1986. The former Center was modeled after Harvard University's Baker Library, and as the first deposit library in Japan accepted literature relating to economics and business management. <http://riim.ws.hosei.ac.jp/english.html>

### Research Center for International Japanese Studies

This Center is a base for the "Declaration of International Japan Studies" of the 21st Century Center of Excellence (COE) program that was adopted by the Ministry of Education, Culture, Sports, Science, and Technology in fiscal year 2002. Under the basic concepts of "Japan Studies as a cross-cultural study" and "Japanese culture's internationality" the Center conducts international research, as well as providing information making full use of modern IT methods. As an educational program, the Center operates the International Japanology Research Center. <https://hijas.hosei.ac.jp/en/>

### Institute for Sustainability Research

This institute was inaugurated as a corporate establishment in 2013. For research tasks, of the research areas covered by the Institute of Sustainability Research and Education, which was open from August 2009 to March 2013, the institute will take over research and projects related to the field of environmental sustainability.

# Research Activities

At present, over 200 professors and instructors from a number of different countries can be counted among the teaching faculty. Each year, there are approximately 30-40 visiting professors and researchers whose duration of stay lasts 2 months to a year.

## HIF Foreign Scholars Fellowship

Invitations are extended to young scholars from abroad, who are at the very minimum enrolled in a doctoral program, to apply to the HIF Fellowship Program to carry out non-degree research programs at Hosei University under the direction of and/or in cooperation with Hosei faculty and researchers. Research areas include those studies in the humanities, social or natural sciences, or engineering, as deemed acceptable by Hosei.

Some scholars are invited for 6 months each year according to the terms of the program. The grantees receive a monthly stipend and all/part of economy class transportation expenses for travel to and from Japan. The HIF fellow also will be provided with shared office space, a PC, and a Hosei University network ID.

# International Students

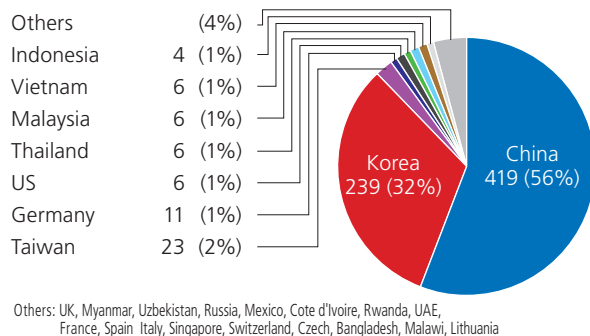
The acceptance of international students goes back to the Meiji Era (1868-1912) with the arrival of the first students from China during the Ching Dynasty. Hosei University takes pride in its long history of matriculating and graduating exceptional international students. Currently over 1,000 international students from around the world are enrolled at Hosei University.

These international students can be classified into three groups: 1) regular degree candidate students who have passed the Special Entrance Examination for International Students and 2) short-term exchange students who are enrolled for 6 months to one year. 3) Japanese language program students. In general, short-term exchange students are sponsored by overseas universities that have mutual exchange agreements with Hosei University, but some privately sponsored students can also be accepted.

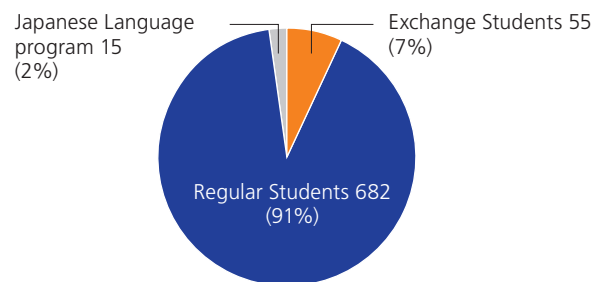
## International Students Data (as of May 2022)

### Undergraduate Schools

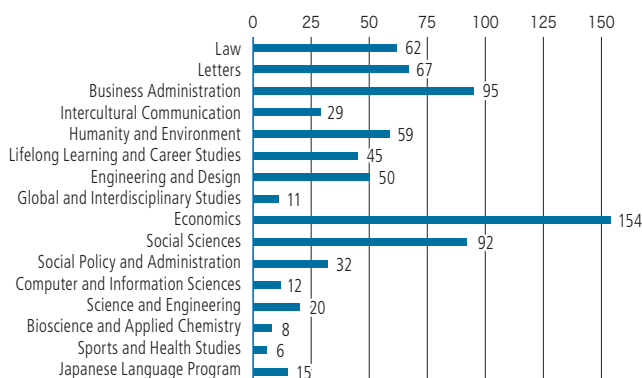
#### Number of Students/Country



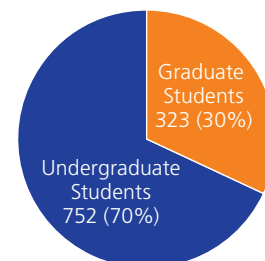
#### Number of International Regular Students and Exchange Students



#### Number of International Students/Faculty

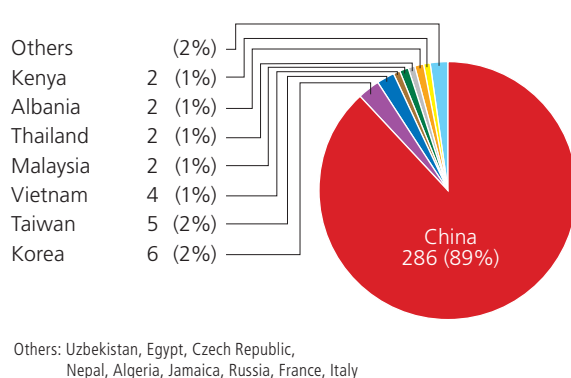


#### Number of Undergraduate Students and Graduate Students

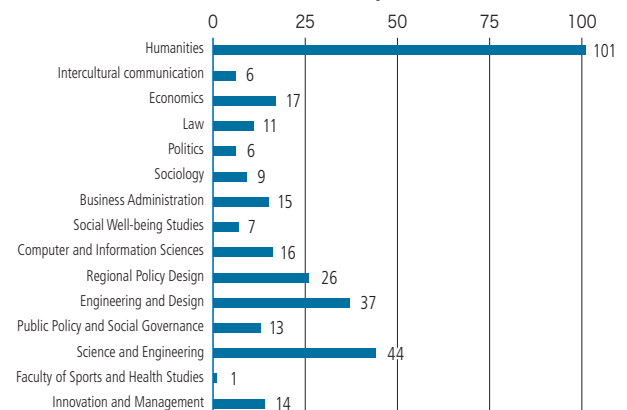


### Graduate Schools

#### Number of Students/Country



#### Number of International Students/Major



## Degree-seeking International Students

■ Special Examination (Undergraduates)—October-December (As of Academic Year 2022)

■ Enrollment—April

■ Spring Term—April-July

■ Fall Term—September-January

# Overseas Partner Universities

To date, Hosei University has concluded general academic agreements and student exchange agreements with 265 universities and institutions in 48 countries and regions around the world (as of February 1, 2023). The global network links Hosei University with the world and continues to expand.

- Schools with general academic agreements
- Schools with researcher exchange
- Schools with student exchange and study abroad agreements

## Europe

### United Kingdom

Royal Holloway, University of London ●  
 The University of Sheffield ●●  
 The University of Nottingham ●  
 The University of Glasgow ●  
 The University of Leeds ●●  
 University of Newcastle upon Tyne ●●  
 University of Sussex ●  
 The University of Bradford ●●  
 The University of York ●  
 Birkbeck, University of London ●●  
 University of Wolverhampton ●  
 School of Oriental and African Studies (SOAS) University of London ●  
 Liverpool John Moores University ●  
 University of Central Lancashire ●

### Ireland

University College Dublin ●  
 University of Limerick ●

### Germany

Humboldt-Universität zu Berlin ●  
 Carl von Ossietzky Universität Oldenburg ●  
 Leuphana Universität Lüneburg ●  
 BAU International Berlin University of Applied Sciences ●  
 Duale Hochschule Baden-Württemberg (DHBW) ●  
 University of Bremen ●●  
 Hochschule für Technik Stuttgart ●  
 The University of Applied Sciences Bremerhaven ●

### France

Université Jean Moulin Lyon 3 ●●●  
 Université Catholique de L'Ouest ●●  
 Université de Paris ●●  
 Université de Versailles ●●  
 Université d'Aix-Marseille ●  
 L'Université de Strasbourg ●●  
 Université de Toulouse - Le Mirail (Toulouse 2) Campus France ●  
 Institut d'Etudes Politiques de Saint - Germain-en-Laye ●

### Italy

Università Carlo Cattaneo ●  
 Università Ca' Foscari Venezia ●●  
 Politecnico di Milano ●

Torino Polytechnical University ●  
 The University of Pavia ●

### Spain

Universitat de Barcelona ●●  
 The Institut Ramon Llull ●  
 Universitat de Vic ●●  
 University of Cordoba ●●  
 Escola universitària salesiana de sarrià (EUSS) ●  
 Universidad de Malaga ●

### Austria

Universität Wien ●●

### Switzerland

Swiss Federal Institute of Technology (ETH), Zürich ●  
 University of St. Gallen ●●  
 The University of Zürich ●  
 Ostasiatisches Seminar, The University of Zürich ●

### Czech

Czech Technical University ●●

### Hungary

Corvinus University of Budapest (formerly Budapest University of Economic Sciences) ●●

### Russia

Institute of Oriental Studies, Russian Academy of Sciences ●●  
 Moscow State University ●●  
 Saint-Petersburg State University ●●  
 Petersburg State Transport University ●●  
 National Research University Higher School of Economics ●●  
 Penza State University ●

### Romania

Universitatea Babeș-Bolyai ●●

### Denmark

Roskilde University ●  
 Aalborg University ●

### Netherlands

Stenden University of Applied Sciences ●●

### Serbia

University of Niš ●

### Poland

The University of Social Sciences ●  
 Kozminski University ●

### Sweden

Blekinge Institute of Technology ●

### Albania

Polytechnic University of Tirana ●

## Asia & Africa

### India

Indian Institute of Science ●

### Thailand

Thammasat University ●●●  
 Chulalongkorn University ●●  
 Srinakharinwirot University ●  
 Thai-Nichi Institute of Technology ●  
 Prince of Songkla University ●●●  
 Chiang Mai University ●

### Indonesia

Sanata Dharma University ●  
 Bogor Agricultural University ●  
 Institute of Technology Sepuluh Nopember ●  
 Binus University ●  
 University of Atma Jaya Yogyakarta ●  
 LSPR Communication and Business Institute ●

### South Korea

Yonsei University ●●  
 Institute for Regional Studies and Development at Yonsei University ●  
 Yonsei Graduate School of Government & Business ●  
 Doksung Women's University ●●  
 SungKongHoe University ●  
 Institute of Labor History Research ●  
 College of Business Administration, Seoul National University ●  
 Gachon University ●  
 Seoul National University ●  
 Institute for Japanese Studies ●  
 Korea University ●  
 Ewha Womans University ●●  
 Inha University Institute of Business and Economic Research ●  
 Asia Climate Change Education Center ●  
 University of Seoul ●●  
 Sungshin Women's University ●  
 Hankuk University of Foreign Studies ●  
 Chung-Ang University ●●  
 Konkuk University ●●  
 Busan University of Foreign Studies ●●  
 Hoseo University ●  
 Kyonggi University ●

### Vietnam

Vietnam National University, Ho Chi Minh City University of Technology ●●  
 Vietnam National University, University of Social Sciences and Humanities, Ho Chi Minh City ●  
 FPT University ●●  
 Vietnam National University,

University of Languages and International Studies, Hanoi ●  
 The University of Da Nang ●  
 Hue University of Sciences ●  
 Foreign Trade University ●  
 Vietnam National University, University of Economics and Business Hanoi ●  
 Ho Chi Minh City University of Architecture ●  
 Ho Chi Minh City University of Technology ●  
 University of Economics Ho Chi Minh City ●  
 Vietnam National University, Ho Chi Minh City University of Science ●  
 Vietnam National University, University of Engineering and Technology Hanoi ●  
 Hanoi University of Science and Technology ●  
 Hanoi University ●  
 Vietnam National University, University of Information Technology Ho Chi Minh City ●  
 Can Tho University ●  
 Hung Yen University of Technology and Education ●  
 Hai Phong University ●  
 Industrial University of Ho Chi Minh City ●  
 Vietnam Japan University ●  
 Thuyloi University ●

### Taiwan

National Sun Yat-sen University ●●  
 Tamkang University ●●  
 Wenzao Ursuline University of Languages ●  
 Chung Yuan Christian University ●  
 National Formosa University ●  
 National Yunlin University of Science & Technology ●  
 National Kaohsiung Normal University ●  
 Shih Chien University ●  
 National Taiwan Normal University ●●  
 National Chengchi University ●●  
 Yuan Ze University ●●  
 Fu Jen Catholic University ●  
 National University of Kaohsiung ●  
 National ChiNan University ●  
 CTBC Financial Management College ●●  
 National Central University ●  
 National Chin-Yi University of Technology ●

### Algeria

Université d'Alger ●

### Ethiopia

Mekelle University ●



Overseas institutions  
with exchange265 schools and  
institutions

in 48 countries and regions

\*As of February 1, 2023

## Study abroad

691 students

\*Results in FY 2022

\*Total of exchange students, faculty SA, overseas training system, HOP, overseas volunteer programs, and overseas internship programs

## International students

1,459 students

\*Results in FY 2022

\*Total of international students in faculties, graduate schools, and short-term acceptance programs

## Ivory Coast

Université Felix Houphouët-boigny ●

## Burkina Faso

Université Ouaga I Pr Joseph KI-ZERBO ●

## Kenya

Karatina University ●

## Tunisia

University of Carthage ●

## Egypt

Egypt Japan University of Science and Technology ●

## Malaysia

Asia Pacific University of Technology &amp; Innovation ●●

University of Malaya ●●

Universiti Teknologi Malaysia ●

UCSI University ●

Faculty of Mechanical Engineering, Universiti Teknologi MARA ●

Universiti Sains Malaysia ●

Universiti Putra Malaysia ●

## Philippines

University of Southern Philippines Foundation ●●

## Cambodia

Cambodian Mekong University ●

Beltei International University ●

Royal University of Phnom Penh ●

China

Peking University ●●●

School of Government Peking University ●

Shanghai International Studies University ●●●

State Administration of Foreign Experts Affairs, the P. R. of China ●●

Shanghai Jiao Tong University ●●

Beijing Normal University ●

Xi'an Jiaotong University ●●

Beijing Foreign Studies University ●

Beijing Center for Japanese Studies ●

Shandong University of Finance and Economics ●

Dalian Nationalities University ●

Wuhan University ●●

Sichuan International Studies University ●●

Minzu University of China ●●

Liaoning University School of International Studies ●

Fuzhou University ●●

Dalian University of Foreign Languages ●

Capital Normal University ●●

University of Science and Technology Beijing ●●

Chongqing Normal University ●●

China Foreign Affairs University ●●

International Center for Communication, Tsinghua University ●

The Pilot Software Engineering Schools Association ●

Beijing Jiaotong University ●

College of Software Jilin University ●

University of Science and Technology of China ●

Xidian University ●

Xiamen University ●

Huazhong University of Science and Technology ●

School of Software, Central South University ●

Northeastern University ●

School of Software, Dalian University of Technology ●●

Southeast University ●

Southwest Jiaotong University ●

The Longmen Grottoes Research Institute ●

Tianjin Foreign Studies University ●

Beijing Language and Culture University ●●

University of International Business and Economics ●●

Fujian Normal University ●●

Dalian University ●

Shandong University ●●●

University of Jinan ●

Northeastern University at Qinhuaogdao ●●

Shandong Xiehe University ●

Southwest University for Nationalities ●●

Huaqiao University ●

Fudan University Department of Cultural Heritage and Museology ●

Shaolin Temple ●

Northwestern Polytechnical University ●●

South China University of Technology ●

East China Normal University ●

Tianjin University ●

Southwest University of Science and Technology ●●

Dalian Polytechnic University ●●

University of Science and Technology Liaoning ●

Laos

National University of Laos ●

Mongolia

National University of Mongolia ●●

## Nepal

Tribhuvan University ●

## Uzbekistan

Tashkent State Institute of Oriental Studies ●●

Samarkand State University ●

## Hong Kong

The Open University of Hong Kong ●

Lingnan University ●

## Singapore

Singapore University of Social Sciences ●

## North America

## Canada

The University of British Columbia ●●

University of Alberta ●

University of Toronto ●●

Brock University ●●

York University ●

Trent University ●

University of Prince Edward Island ●

University of Victoria ●

BCI The Bureau de Coopération Interuniversitaire ●

USA

Truman State University ●●

Baylor University ●●

University of California, Davis (UCD) ●●

Michigan State University ●●

Boston University ●

California State University, East Bay (CSUEB) ●●

University of California, San Diego (UCSD) ●

University of Nevada, Reno ●●

Boise State University ●●

San Jose State University ●

Fontbonne University ●

San Diego State University ●●

Southern California Institute of Architecture ●●

Gustavus Adolphus College ●●

West Chester University of Pennsylvania ●●

University of Wisconsin, Milwaukee ●●

Minnesota State University, Mankato ●●

Medaille College ●

Portland State University ●

Westfield State University ●●

University of Utah ●●

George Mason University ●

New School University ●

University of Kansas ●

University of Wisconsin-River Falls ●

Mexico

Universidad Anáhuac ●

Universidad De Guadalajara ●●

## South America

## Argentina

National University of La Plata ●

## Bahamas

University of the Bahamas ●

## Oceania

## Australia

The University of Sydney ●●

The University of Adelaide ●

Monash University ●

Bond University ●●

Australian Catholic University ●●

## New Zealand

Massey University ●

The University of Auckland ●

Otago Polytechnic ●

# Top Global University Project

Hosei University was selected to be part of the Top Global University Project by the Ministry of Education, Culture, Sports, Science and Technology. However, globalization is not the objective of our education program. Hosei University aims to help students develop practical skills to resolve the various issues that interfere with liberty and progress in the world by learning and leveraging global skills through multicultural symbiosis and viewpoints for understanding others.

## Five goals of international education



To attain these goals, diverse educational programs are provided

Students can acquire skills that can be globally leveraged while studying in Extracurricular Problem – solving fieldwork activity	Increased opportunities for studying abroad	Further globalization of campuses
<b>Key initiatives</b> <ul style="list-style-type: none"> <li>The number of classes not conducted in Japanese has increased to 10% at the entire university</li> <li>Programs have opened in which students can study and graduate using English only</li> <li>High language proficiency is developed through English Reinforcement Programs (ERPs) and enhanced specialized and related subjects taught in English</li> <li>A subject group looking toward a sustainable society has been established to motivate students who can contribute to a sustainable society</li> <li>Problem-solving classes opened for international students to study and work in the field together with Japanese students</li> </ul>	<b>Key initiatives</b> <ul style="list-style-type: none"> <li>Credit courses have been enhanced and include the a cross-the-board dispatch student program and individual faculty study abroad programs</li> <li>Overseas partner schools will increase from 194 to 250 universities/institutions</li> <li>International volunteer and internship programs have been enhanced</li> </ul>	<b>Key initiatives</b> <ul style="list-style-type: none"> <li>Attract 3,000 international students through diversified entrance exam systems and new degree courses offered in English only</li> <li>Enhance international student dormitories and other facilities</li> <li>Reform entrance exam systems for advanced globalization, including an entrance exam based on the International Baccalaureate Program</li> </ul>

## Specific visions for international education

In order to actually develop leaders who can survive in any part of the world, as well as global leaders with a well cultivated personalities, Hosei University has specified and promoted the following numerical targets.

Participation in global activities	Study abroad with credits	Share of CEFR B1 (equivalent to TOEFL® ITP 500)	Degree courses using English only	Collaborative high schools (in Japan and overseas)	Recurrent programs	Share of international faculty members
100 %	1,500 students	48.1 %	7	110	1,200 students	60 %

## What is the Top Global Universities project?

This project promoted by the Ministry of Education, Culture, Sports, Science and Technology to provide intensive support to universities that promote fundamental internationalization and internal reforms for stronger international competitiveness in higher education in Japan. Selected universities include prestigious schools that undertake the world highest level of research and education and schools that lead internationalization through innovative

attempts.

Hosei University seeks to help students develop practical skills and leadership competencies that can be leveraged globally so that students can maximize, in a global society, the skills accumulated through our interesting programs under the project concept of "Create a global university that conceptualizes a sustainable society led by Japan as an advanced problem-solving country."

# International Programs

## Developing global leaders with rich personalities through interesting programs

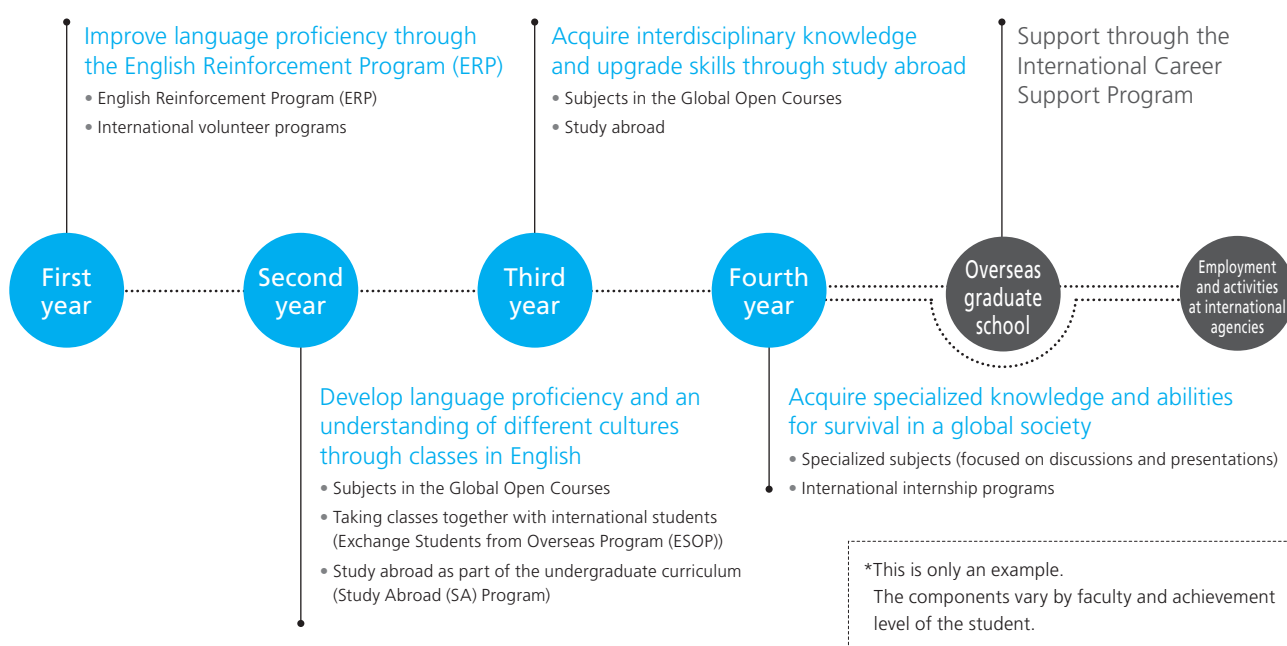
Hosei University was selected for the Project for Promotion of Global Human Resource Development by the Ministry of Education, Culture, Sports, Science and Technology. This project is operated by the Global Education Center at Hosei, which deploys interesting programs to allow students to gradually upgrade skills from their first year and use such skills in practice, including improvement of language proficiency, understanding of different cultures, and enhancement of global practical skill.



## Example of global human resource development

**Example** Ms. A, Department of Business Strategy, Faculty of Business Administration

I have basic English skills and want to specialize in business strategy while acquiring advanced English proficiency in order to find employment in an international agency.



## English Reinforcement Program (ERP)

This program is for students who have English proficiency of TOEFL® iBT 45 (equivalent to PBT/ITP 450) or higher and are highly motivated to study English. The ERP classes are held on all campuses and can be taken free of charge between other classes. The program allows students to efficiently acquire practical English skills. The classes are taught in English in an interactive style in small groups. Students can acquire the four skills of English (listening, speaking, reading, and writing). The classes that emphasize skill integration allow students to steadily develop effective English proficiency with a balance of all four skills.

### ERP Subjects

- Oral Presentation & Discussion: Intermediate
- Writing & Discussion: Intermediate
- Oral Presentation & Discussion: Higher-Intermediate
- Writing & Discussion: Higher-Intermediate
- Oral Presentation & Discussion: Advanced
- Writing & Discussion: Advanced
- Intensive English



## Global Lounge

The Global Lounge lets students acquire practical language skills on campus through opportunities for daily communication with English Study Advisors and international students. Each of the three campuses has a Global Lounge. The lounge also functions as the receiving office for ERP and international volunteer and internship programs; full-time personnel respond to inquiries and provide consultation services. English Study Advisors wait for students and respond to their requests for ideas on how to advance in English and to learn about foreign cultures.



## International volunteer and internship programs

Students acquire international perspectives and skills by looking at the world in new ways through a variety of different experiences. There are two programs: international volunteers, where students contribute to the local community based on some problem solving projects, and international internships, where students are sent to work at business enterprises and NGOs. These programs help students meet the challenges overseas by learning about different cultures, languages, and working styles.



### International volunteer and internship programs

- International volunteer activities in Vietnam
- On-the-job training at a local company in Vietnam
- On-the-job training in a project to support farmers in the Philippines
- On-the-job training at a company, municipality and NPO in Romania
- On-the-job training at a Japanese corporation in Malaysia
- On-the-job training in Japanese language and culture education at a U.S. university

## Japanese Language Program (JLP)

Hosei university has accepted students from overseas for many decades to develop the university's international activities.

For a more sustainable globalization, we mainly deliver JLP for the followings:

- Exchange Students from Overseas Program (ESOP) students
- English-based Degree Program students; GBP, SCOPE, and IGESS

JLP also, as one of its objectives, focuses on attaining Japanese proficiency required for both undergraduate and graduate programs, as well as business in future careers.

Our educational goal is to develop internationally competent students capable of communicating in Japanese and contributing to a global society.

We open our doors to foreign students who are eager to learn Japanese language and culture at a university in Tokyo.



# HOSEI UNIVERSITY ESOP

## Exchange Students from Overseas Program (ESOP)

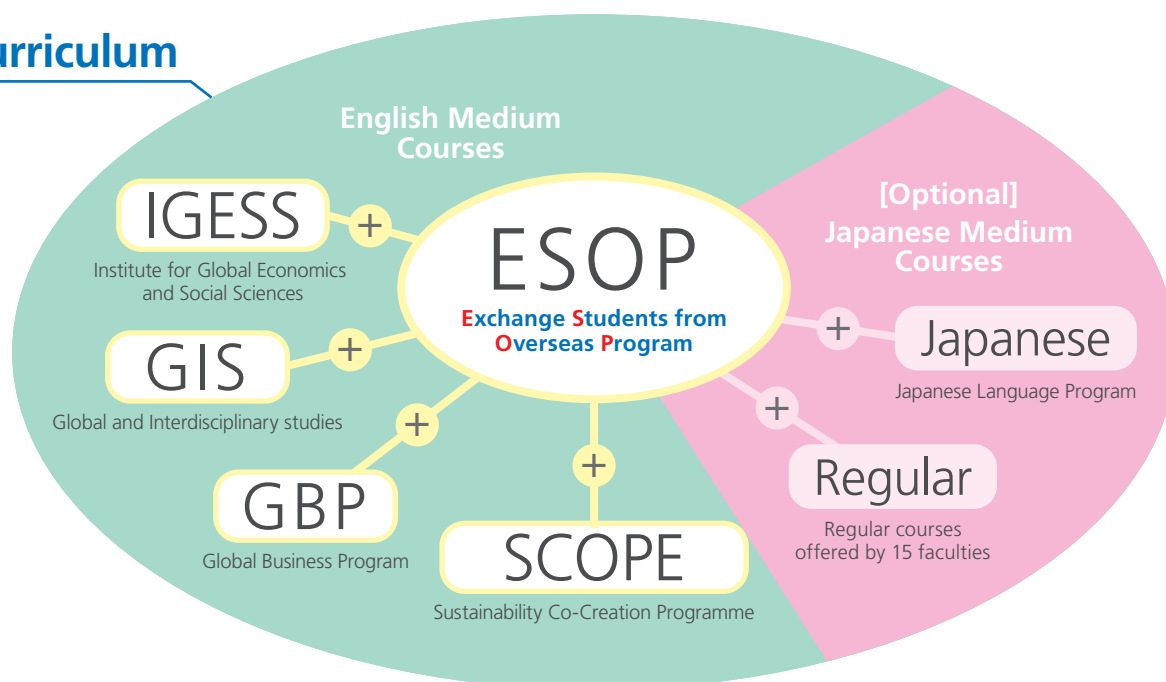
The HOSEI University Exchange Students from Overseas Program (ESOP) is an independent academic program administered under HOSEI University International Office. Although ESOP is independent of HOSEI University's regular faculty system, both professors and students from the regular faculties teach and study in ESOP sponsored classes, and ESOP is an integral component in HOSEI University's international cooperation efforts. ESOP was established in 1997 in order to provide meaningful academic opportunities to exchange students, from our overseas partner institutions as well as individual applicants, who wish to experience the reality of modern Japan.



## Curriculum

ESOP courses are for exchange students to learn about Japanese society from various perspectives.

### Curriculum



## Variety of support

Hosei University Global Education Center provides various types of support in the following areas to help exchange students make the most out of their time in Japan.

### Type of support

<b>HUBs (Hosei University Buddy system)</b>	Hosei students and office support airport pick-up service, opening of bank account, procedures at ward office, National Health Insurance, student wellness, teaching their native languages to each other etc.
<b>Japanese cultural experience</b>	Provide opportunities to communicate with Japanese students and many chances to participate in the events so that students can experience Japanese culture.
<b>Health care</b>	Clinic and counseling support on campus, Introduction of hospitals offering English services, attendance to a clinic.
<b>Scholarships</b>	Hosei University gives financial support for the dormitory housing expenses as a scholarship. Availability changes every year.

# Hosei University English-based Degree Programs

Since 2008, when Hosei University established the Faculty of Global and Interdisciplinary Studies (GIS), offering bachelor degrees in the liberal arts taught completely through the medium of English, the university has been at the forefront of global education. Now, to increase the number of students we are able to accept from overseas, Hosei University is taking the initiative and expanding its English-based degree programs as follows:

**Global Business Program (GBP) from September 2016**

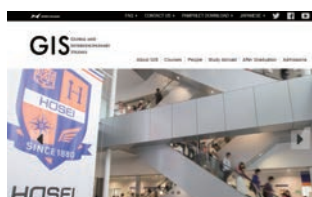
**Sustainability Co-Creation Programme (SCOPE) from September 2016**

**Institute for Global Economics and Social Sciences (IGESS) from September 2018**

**Global MBA Program from September 2015**

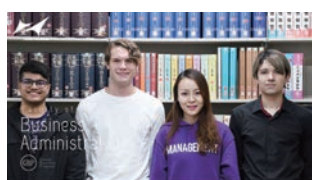
**Institute of Integrated Science and Technology (IIST) from September 2016**

## Undergraduate



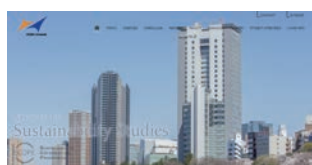
### ■ Global and Interdisciplinary Studies (GIS)

GIS students can experience a rich and rewarding interdisciplinary education in the English language. Classes are taught by experienced professors from around the world, whose research covers a range of topics and disciplines. GIS offers a challenging and rewarding academic curriculum to better develop students' global perspectives and critical thinking. In the culturally diverse environment of GIS, students not only grow intellectually, but through participating in a dynamic and interactive setting, learn practical problem-solving skills in a variety of fields.



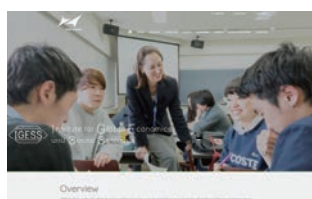
### ■ Global Business Program (GBP)

The Global Business Program (GBP) is an integrated program as part of the Faculty of Business Administration. Its foundation is based on the objective of developing human resources adaptable for the management of globalized business in the 21st century - often referred to as "The Asian Century". The GBP offers the unique opportunity to obtain in-depth knowledge of Japanese-style business management, which has been fundamental to corporate success throughout the world.



### ■ Sustainability Co-Creation Programme (SCOPE)

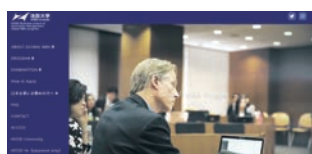
Sustainability Co-creation Programme, SCOPE, aims to develop global (global plus local) citizens who can contribute to realizing a more sustainable society in the global environment. Learning how to engage with both global and local points of view allows for the creation of a sustainable society. SCOPE utilizes experiential learning, research, and service activities that are essential for students to implement practical solutions for a sustainable future.



### ■ Institute for Global Economics and Social Sciences (IGESS)

IGESS stands for Institute for Global Economics and Social Sciences based on collaboration among four faculties (Economics, Social Sciences, Social Policy and Administration, and Sports and Health Studies.) IGESS is intended to support the development of globally-minded experts in economics and social sciences toward the formation of a sustainable society. IGESS's educational curriculum is designed for students who are eager to study Global Economics, especially Global Economy, Global Business and Business Communications in English.

## Graduate



### ■ Global MBA Program

The HOSEI Business School of Innovation Management (HBSIM) focuses on strengthening students' understanding of Japanese management and Japanese companies, while equipping them with the basic knowledge and global expertise of a regular MBA program. You gain practical experience in real business environments, including internship experience in regional government organizations and private companies.



### ■ Institute of Integrated Science and Technology (IIST)

IIST was established cooperatively by the Hosei University Graduate School of Computer and Information Sciences and the Graduate School of Science and Engineering for the purpose of conducting cutting-edge research in their specialized scientific fields while setting up cross-major research fields to solve various problems toward a sustainable global society. IIST enables students to acquire practical wisdom necessary to tackle global issues, along with the deeply specialized knowledge in their majors.

# Outgoing Student Exchange Program

## Exchange program

All Hosei students who are enrolled as a second year or third year can apply for the Outgoing Student Exchange Program. Exchange students study at partner institutions for one or two semester(s). There are 69 institutions in 23 countries and regions that have concluded the student exchange agreement with Hosei University. The scholarship of 1,000,000 yen or 700,000 yen will be paid for all exchange students. (The scholarship shall be the half amount if the student's study period is one semester.) The tuition fee of the partner institution will be exempted based on the student exchange agreement. The credits acquired at the partner institutions are recognized as credits required for graduation at Hosei University with a limitation of 30 to 60 credits.

## List of partner institutions

Country/region	Institution	Exam language	Number of students			Program begins	Scholarship
			'18	'19	'22		
USA	Truman State University	English	2	2	2	Fall semester	1,000,000 yen for 2 semesters
	Baylor University		2	2	2		
	University of California, Davis		2	2	2		
	Boise State University		2	2	2		
	San Diego State University		1	2	1		
	West Chester University		2	2	2		
	Gustavus Adolphus College		2	1	2		
	University of Wisconsin, Milwaukee		2	2	0		
	Minnesota State University, Mankato		2	2	2		
	Westfield State University		2	2	1		
	University of Nevada, Reno		2	1	2		
	George Mason University		2	2	2		
UK	The University of Sheffield	English	2	1	2	Fall semester	1,000,000 yen for 2 semesters
	The University of Leeds		2	2	2		
	University of Newcastle upon Tyne		2	2	2		
	University of Bradford		2	2	2		
	Birkbeck, University of London		0	0	2		
	School of Oriental and African Studies (SOAS) University of London		-	-	0		
	Liverpool John Moores University		-	-	-		
	University of Central Lancashire		-	-	-		
Canada	BCI Student Exchange Program "Quebec"	French / English	-	-	1	Spring semester	1,000,000 yen for 2 semesters
Australia	The University of Sydney	English	1	1	0		
	The University of Adelaide		1	1	0		
	Bond University		1	1	1		
Germany	Australian Catholic University	German / English	1	1	0	Fall semester	1,000,000 yen for 2 semesters
	Duale Hochschule Barden-Württemberg Karlsruhe (DHBW)		1	2	0		
Austria	Hochschule für Technik Stuttgart University of Applied Sciences	German / English	0	2	1	Fall semester	1,000,000 yen for 2 semesters
	University of Bremen		2	2	1		
Switzerland	Universität Wien	English	1	3	2	Fall semester	1,000,000 yen for 2 semesters
Czech	Universität St. Gallen		2	1	2		
	Czech Technical University	English	2	0	3	Fall semester	1,000,000 yen for 2 semesters
Netherlands	Stenden University of Applied Sciences		1	2	3		
France	Université Jean Moulin-Lyon3	French / English	2	2	2	Fall semester	1,000,000 yen for 2 semesters
	Université Catholique de L'Ouest		1	0	1		
	Université de Versailles Saint-Quentin-en-Yvelines		1	3	2		
	Université de Paris		1	1	0		
	Université de Strasbourg		1	0	0		
	Sciences Po Saint-Germain-en-Laye		2	1	1		
Denmark	Aalborg University	English	2	2	2	Spring semester	700,000 yen for 2 semesters
Sweden	Blekinge Institute of Technology		-	-	0		
Italy	Università Carlo Cattaneo	Italian / English	1	1	0	Spring semester	700,000 yen for 2 semesters
	Università Ca' Foscari Di Venezia		2	2	2		
Russia	Moscow State University, Institute of Asian and African Studies	Russian	2	0	0	Fall semester	700,000 yen for 2 semesters
	Saint-Petersburg State University	Russian / English	1	1	0		
	National Research University Higher School of Economics (HSE)	Russian / English	1	1	0		
Spain	Universitat de Vic	Spanish / English	2	2	1	Spring semester	700,000 yen for 2 semesters
	Universidad de Cordoba		1	1	1		
South Korea	Yonsei University	Korean / English	0	1	1	Spring semester	700,000 yen for 2 semesters
	DuSung Women's University		0	0	0		
	Ewha Womans University	Korean / English	1	1	2		
	University of Seoul		1	3	1		
	Konkuk University		1	3	2		
	Seoul National University		-	-	0		
Uzbekistan	Chung-Ang University	Russian	-	-	-	Fall semester	700,000 yen for 2 semesters
	Tashkent State University of Oriental Studies		0	1	0		
Mexico	Universidad de Guadalajara	Spanish	2	2	0	Fall semester	700,000 yen for 2 semesters
China	Shanghai International Studies University	Chinese	2	3	1*		
	Minzu University of China		2	1	2*	Fall semester	700,000 yen for 2 semesters
	Capital Normal University		2	2	1*		
Taiwan	Shandong University	Chinese / English	2	2	0	Fall semester	700,000 yen for 2 semesters
	National Sun Yat-Sen University		1	1	0		
	Tamkang University		2	2	0		
	National Chengchi University		0	2	1		
	Yuan Ze University		0	1	0		
Hong Kong	National Taiwan Normal University	English	0	2	0	Fall semester	700,000 yen for 2 semesters
Thailand	Lingnan University		-	-	-		
	Thammasat University	English	1	1	0	Fall semester	700,000 yen for 2 semesters
Malaysia	Chulalongkorn University		1	1	0		
	University of Malaya	English	2	2	2	Fall semester	700,000 yen for 2 semesters

\*Screening examinations held in the spring and fall

\*There are some requirements for the application (GPA, language skills etc.)

\*In 2022, due to the influence of Covid-19, some of the outgoing program were suspended.

## Fee-paying Study Abroad Program

The Fee-paying Study Abroad Program enables undergraduate students of Hosei University, who obtained a letter of acceptance from an overseas institution of their choice (offering a regular 4-year or higher education of a similar level and with the right to award a degree), and applied to the present university, to study abroad at such institution. The period of such program (1 year or 1 semester) will be included in the number of years required for graduation. Further, after returning to Japan, the credits acquired at such institution will be recognized as credits of Hosei University. The scholarship of up to 900,000 yen will be granted for outgoing students.

# Faculty-specific study abroad programs and overseas training programs

Faculty-specific Study Abroad (SA) programs are incorporated into the curricula at the Faculty of Letters (Department of English), Faculty of Business Administration, Faculty of Intercultural Communication, Faculty of Lifelong Learning and Career Studies, Faculty of the Global and Interdisciplinary Studies (GIS), Faculty of Economics, Faculty of Social Sciences, Faculty of Science and Engineering, and Faculty of Bioscience and Applied Chemistry. Training programs appropriate for the faculty curricula are also available, including the Hosei Oxford Programme (short-term training at the University of Oxford for students of the Department of Global Politics, Faculty of Law) and overseas training in Sweden or other countries with advanced social welfare programs for students of the Faculty of Social Policy and Administration. The Faculty of Social Sciences recognizes credits acquired during short-term study abroad programs during the spring or summer vacation.

## ■ List of study abroad programs and overseas training programs

Faculty & Program	Scope/eligibility	Participants in 2019	Participating countries (select one)	Period
Faculty of Law Overseas Study Program (OSP)	All students of Global Politics Several students of Law and of Political Science	---	UK, Philippines	Approx. 10 to 15 days in the summer vacation
Faculty of Letters (Department of Philosophy) International Philosophy Special Course	Applicants in the second to fourth years of Philosophy (When applicants exceed the capacity of 20 students, a selection is required)	14	France, Germany	1 week in February
Faculty of Letters (Department of English) SA Program	Applicants in the first to fourth years of English (internal selection is required)	16	Ireland	3 weeks in the summer vacation
	Applicants in the second to fourth years of English (internal selection is required)	4 6		Approx. 3 months in the fall semester Approx. 7 months in the fall semester
	Applicants in the 2nd to 4th years of English (internal selection is required)	1 1	USA	Approx. 4 months in the fall semester Approx. 7 months in the fall semester
Faculty of Business Administration SA Program	Capacity: approx. 30 students (faculty selection is required)	---	English-spoken areas	Approx. 3 to 4 months in the fall semester of the second to fourth years
Faculty of Intercultural Communication SA Program	All faculty students should study abroad (see the footnote* for international students)	245	UK, USA, Australia, Canada, France, Russia, China, Spain, South Korea, Germany	Long-term: approx. 3 to 6 months in the fall semester of the second year
Faculty of Humanity and Environment SA Program	Capacity: approx. 10 students (faculty selection is required)	10	Australia	Approx. 3 months and a half in the fall semester
Faculty of Humanity and Environment Overseas Field Study	Applicants (faculty selection is required)	57	Australia, Southeast Asia, China, Europe, etc. ** Varies by academic year	Approx. 10 to 14 days in the summer or spring vacation
Faculty of Lifelong Learning and Career Studies SA Program	Capacity: 10 students faculty selection is required)	10 Each	Vietnam, Taiwan	2 weeks in the summer vacation
Faculty of Global and Interdisciplinary Studies (GIS) Overseas Academic Study Program	All applicants (requirements of the participating organization should be satisfied)	8	USA, Canada, UK	4 to 5 months
		---	New Zealand	4 or 10 months
Faculty of Economics SA Program	Capacity: approx. 60 to 100 students (faculty selection is required)	45	USA, UK, Australia, Canada * Varies by academic year	Approx. 4 months in the spring semester of the second year
Faculty of Social Sciences SA Program	Applicants (faculty selection is required)	22	USA, Canada, China	Half-term: 2 to 5 months in the fall semester in the second or third year Long-term: approx. 8 months in the third year (Canada only)
Faculty of Social Sciences Short-term Study Abroad Program	Students who are enrolled for Elementary German A/B or for Elementary French A/B	---	Germany, France	Spring vacation in 1st to 3rd year Summer vacation in the 2nd to 4th years
Faculty of Social Policy and Administration Overseas Training System	Faculty: 30 students (faculty selection is required)	30	Sweden	Approx. 8 days in the summer vacation in the second year
Faculty of Sports and Health Studies Overseas Extracurricular Training	Capacity: 22 students (faculty selection is required)	18	USA	2 weeks in the summer vacation in the second or third year
Faculty of Science and Engineering Study Abroad Program	Capacity: approx. 30 students	---	USA	4 weeks in the summer vacation
	Capacity: approx. 25 students	8	Ireland	4 weeks in the spring vacation
Faculty of Bioscience and Applied Chemistry Study Abroad Program	Capacity: approx. 30 students	---	USA	4 weeks in the summer vacation
	Capacity: approx. 15 students	6	Ireland	4 weeks in the spring vacation

\* Students in the Faculty of Intercultural Communication who are admitted through an entrance exam for international students should participate in the Study Japan (SJ) Program instead of the SA Program.

\*\*Faculty-specific study abroad systems and overseas training systems have respective scholarship systems (except the Short-term Study Abroad Program, Faculty of Social Sciences).

\*\*\*In 2020 and 2021, all programs were canceled due to covid-19 and some programs were implemented online.



# Tuition and fees

## Tuition and fees for FY 2023 (Undergraduate Faculties)

Faculty	Year	Admission fee (yen)	Annual tuition (yen)	Annual experiment and exercise fees (yen)	Annual education enhancement fee (yen)	Annual total (yen)
Law, Letters (Philosophy, Japanese, English, History), Economics, Social Sciences, Business Administration, Humanity and Environment, Social Policy and Administration (Community Development)	1st	240,000	831,000	-	228,000	1,299,000
	2nd to 4th	-	831,000	-	228,000	1,059,000
IGESS GBP SCOPE	1st	240,000	968,000	-	228,000	1,436,000
	2nd to 4th	-	968,000	-	228,000	1,196,000
Letters (Geography)	1st	240,000	831,000	22,000	228,000	1,321,000
	2nd to 4th	-	831,000	22,000	228,000	1,081,000
Letters (Psychology)	1st	240,000	831,000	42,000	228,000	1,341,000
	2nd to 4th	-	831,000	42,000	228,000	1,101,000
Intercultural Communication	1st	240,000	1,063,000	38,000	264,000	1,605,000
	2nd to 4th	-	532,000	22,000	136,000	690,000
	3rd to 4th	-	1,063,000	38,000	264,000	1,365,000
Social Policy and Administration (Clinical Psychology)	1st	240,000	831,000	42,000	228,000	1,341,000
	2nd to 4th	-	831,000	42,000	228,000	1,101,000
Lifelong Learning and Career Studies	1st	240,000	831,000	21,000	228,000	1,320,000
	2nd to 4th	-	831,000	21,000	228,000	1,080,000
GIS (Global and Interdisciplinary Studies)	1st	240,000	1,097,000	-	232,000	1,569,000
	2nd to 4th	-	1,097,000	-	232,000	1,329,000
Sports and Health Studies	1st	240,000	933,800	100,000	278,000	1,551,800
	2nd to 4th	-	933,800	100,000	278,000	1,311,800
Computer and Information Sciences, Engineering and Design, Science and Engineering (excluding Aviation Technology, Mechanical Engineering), Bioscience and Applied Chemistry (excluding Clinical Plant Science)	1st	240,000	1,172,000	87,000	312,000	1,811,000
	2nd to 4th	-	1,172,000	87,000	312,000	1,571,000
Science and Engineering (Aviation Technology, Mechanical Engineering)	1st	240,000	1,172,000	486,000	312,000	2,210,000
	2nd	-	1,172,000	486,000	312,000	1,970,000
	3rd	-	1,172,000	4,878,000	312,000	6,362,000
	4th	-	1,172,000	87,000	312,000	1,571,000
Bioscience and Applied Chemistry (Clinical Plant Science)	1st	240,000	1,172,000	147,000	312,000	1,871,000
	2nd to 4th	-	1,172,000	147,000	312,000	1,631,000

## Tuition and fees for the first year for FY 2023 (Graduate Schools)

### ■ Master's Programs

	Students from:	Tuition for the first year
Humanities	Hosei	650,000 yen <sup>*1</sup>
	Other schools	850,000 yen <sup>*1</sup>
Sciences	Hosei	970,000 yen
	Other schools	1,170,000 yen
	Hosei <sup>*3</sup>	1,030,000 yen <sup>*3</sup>
	Other schools <sup>*3</sup>	1,230,000 yen <sup>*3</sup>
IIST	Hosei	1,060,000 yen
	Other schools	1,260,000 yen
Sports and Health Studies	Hosei	846,800 yen <sup>*1</sup>
	Other schools	1,046,800 yen <sup>*1</sup>
Regional Policy Design	Hosei	1,020,000 yen
	Other schools	1,155,000 yen

### ■ Doctoral Programs

	Students from:	Tuition for the first year
Humanities	Hosei	460,000 yen <sup>*2</sup>
	Other schools	660,000 yen <sup>*2</sup>
Sciences	Hosei	800,000 yen <sup>*2</sup>
	Other schools	1,000,000 yen <sup>*2</sup>
	Hosei <sup>*3</sup>	860,000 yen <sup>*3</sup>
	Other schools <sup>*3</sup>	1,060,000 yen <sup>*3</sup>
IIST	Hosei	780,000 yen
	Other schools	980,000 yen
Sports and Health Studies	Hosei	672,000 yen <sup>*2</sup>
	Other schools	872,000 yen <sup>*2</sup>
Regional Policy Design	Hosei	885,000 yen <sup>*2</sup>
	Other schools	1,155,000 yen <sup>*2</sup>

\*1 In some master's courses in the arts, experiment, exercise, and membership fees are required in addition to this amount. Such fees are included in the indicated amounts for courses in the sciences.

\*2 For students in the doctoral courses, research grants are awarded during the standard course term (300,000 yen for students in the arts and 450,000 yen for students in the sciences).

\*3 Only for Clinical Plant Science Field, Frontier Bioscience

## Scholarship and tuition reduction/exemption

Name	Annual amount paid	Planned number of recipients	Applicable grades	Eligibility
<b>New Hosei University Centennial Scholarship</b>	Humanities: 200,000 yen Sciences: 250,000 yen	170 recipients	1st to 4th years	Students who have demonstrated excellent academic performance and require financial aid for education
<b>Hosei International Fund (HIF) International Undergraduate Student Scholarship</b>	Humanities: 200,000 yen Sciences: 250,000 yen	20 recipients	2nd to 4th years	Privately funded international students who are registered in a faculty of Hosei who have demonstrated excellent academic performance and who have outstanding personal qualities
<b>Hosei University Vietnam Friendship Scholarship Funded by Taisei Corporation</b>	Amount of tuition and other fees	Several recipients	1st year	Students with Vietnamese nationality who enter the Faculty of Engineering and Design (Architecture / Civil and Environmental Engineering)
<b>Tuition reduction/exemption</b>	Eligible students enjoyed a 0%~50% discount off their tuition			

\* Please note that the tuition reduction/exemption and scholarship are subject to change in the future

## ICHIGAYA Campus



Located in the center of Tokyo, this urban campus is symbolized by the Boissonade Tower, which stands high above the other buildings in the area.

## KOGANEI Campus



Koganei Campus offers well-equipped, state-of-the-art facilities for the study of science and technology in an environment for comfortable campus living.

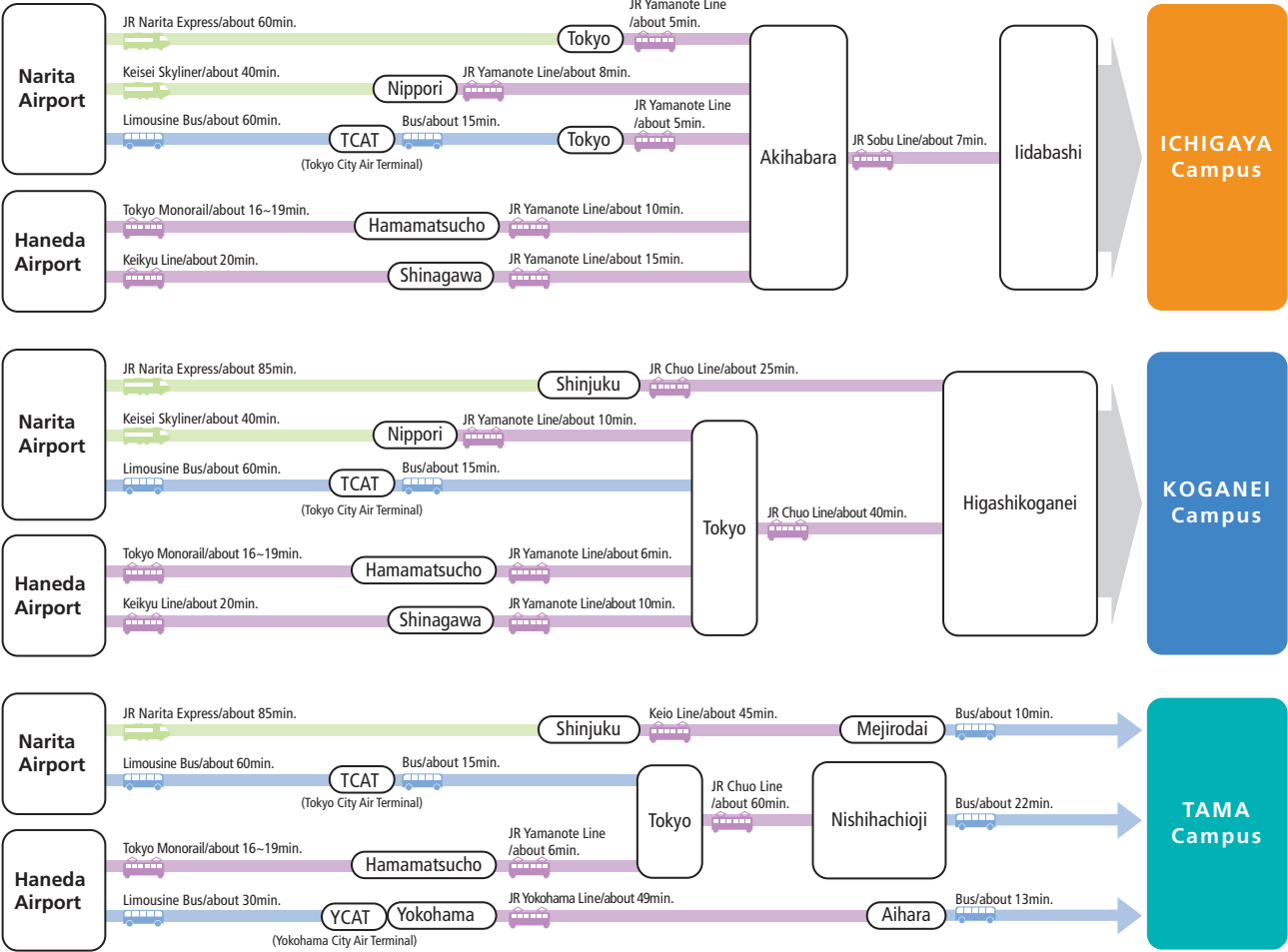
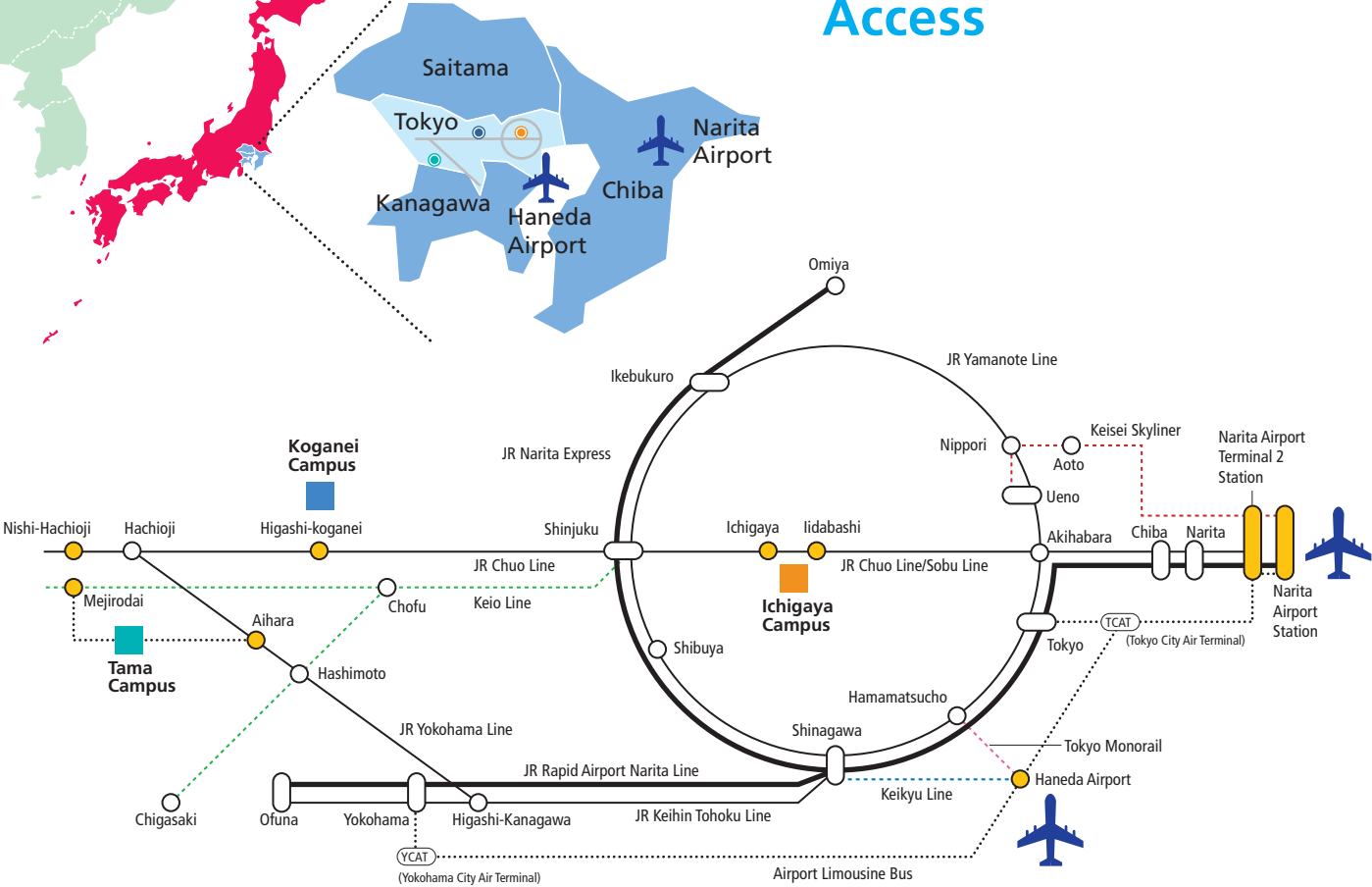
## TAMA Campus



Tama Campus has an open atmosphere that combines an environment rich in nature as portrayed by seasonal changes and urban functions that provide support for campus life.



# Campus Location & Access



# HOSEI University

## Hosei University Global Education Center

2-17-1 Fujimi, Chiyoda-ku, Tokyo 102-8160

TEL: 81-3-3264-9315/9547 FAX: 81-3-3264-4624 e-mail: [gloaledu@hosei.ac.jp](mailto:gloaledu@hosei.ac.jp)

URL: <https://www.global.hosei.ac.jp/>