

Information

Language Requirements

To attend courses offered in English:
English Language Proficiency Test score (Non-native English speaker)
※There are no specific criteria for the test score.
To attend courses offered in Japanese:
Japanese Language Proficiency Test Score

Exchange Period

Full year (two semesters) or one semester

Academic Calendar

Spring Semester: April- July
Fall semester: September- January

Housing

Hosei University subsidizes (25,000 JPY) the monthly rent of the dormitory as a scholarship.

Deadline for Application

Spring Semester: End of November
Fall Semester: End of February

Contact us

E-mail : esop@ml.hosei.ac.jp

Website : <http://www.global.hosei.ac.jp/en>

Address: Global Education Center, Hosei University,
2-17-1 Fujimi, Chiyoda-ku, Tokyo 102-8160



Hosei University



✉ esop@ml.hosei.ac.jp
💻 <http://www.global.hosei.ac.jp/en>
📷 [hosei_university](#)

ESOP

Exchange
Students from
Overseas
Program

Welcome to
Exchange Students from
Overseas Program at

Hosei University

Facts and Figures

Founded in 1880

15 faculties and 38 departments

15 graduate schools and 32 courses

798 courses taught in English

41,000 students

1500 international students

Student Exchange Partner Institutions
69 universities 23 countries

Selected for TOP GLOBAL UNIVERSITY
project by Japanese Government

Location



Curriculum

English

ESOP

GIS

GBP

SCOPE

IGESS

IIST

GMBA

Japanese

Japanese Language Course

Regular Course

ESOP

Exchange Students from Overseas Program

ESOP provides English medium courses about Japan. In this program, exchange students can learn about real Japan through the courses which contain economy, society, culture, media, social issues and others of Japan.

GIS

Global and Interdisciplinary Studies

GIS offers opportunities for students to gain a deep and wide knowledge of various disciplines, including (but not limited to) the "Arts and Literature", "Linguistics and Language Acquisition", "Culture and Society", "International Relations and Governance", and "Business and Economy".

GBP

Global Business Program

GBP offers the unique opportunity to obtain in-depth knowledge of the Japanese style of business management, which has been fundamental to corporate success throughout the world. In addition to theoretical lectures, students can learn Japanese professional management in English through company visits, internships, and lectures provided by business instructors.

SCOPE

Sustainability Co-creation Programme

SCOPE offers well-balanced, wide-ranging courses from the humanities, social sciences, to natural sciences to allow students to comprehend and create solutions for the social and environmental challenges that we face.

IGESS

Institute for Global Economics and Social Sciences

IGESS is intended to support the development of globally-minded experts in economics and social sciences toward the formation of a sustainable society. IGESS offer extensive knowledge of economics, economic theory and application, applied global economics and a variety of other disciplines to understand today's global economy.

IIST

Graduate School but undergraduate students can take IIST

Institute of Integrated Science and Technology IIST offers six cross-major learning fields of study, Computer and Information Sciences, Electrical and Electronic Engineering, Applied Informatics, Systems Engineering and Science, Applied Chemistry, Frontier Bioscience.

GMBA

Global MBA

The HOSEI GMBA provides the knowledge of Japanese production, supply management, and marketing will be your edge, as will be your understanding of such concepts as omotenashi and familiarity with such pop culture media as manga & anime.

Regular course

Students with high proficiency level of Japanese language are eligible to take any of the regular Hosei University courses taught in Japanese. The regular courses offered by 15 University faculties enable students to deepen their knowledge in their current study fields.

Japanese Language Course

Exchange students are allowed to take Japanese course for free if they want. Japanese language program offers many courses at all levels from beginners to advanced level.

Marketing in Japan



This is a unique course taught by several professionals in business. Students will learn actual marketing strategy and management in a variety of fields of industry as well as principles and concepts. Students who wish to work in Japan in the future or aiming for Japanese related business can indirectly experience the actual Japanese company.

Hospitality Management in Japan



This course is designed to provide the fundamental concepts and understanding of hospitality by introducing how hospitality is practiced in different industries in Japan and discussing the key elements necessary in the pursuit of hospitality. This course is taught by instructors from Japan Airlines Corporation, allowing students to learn from their knowledge and experiences.

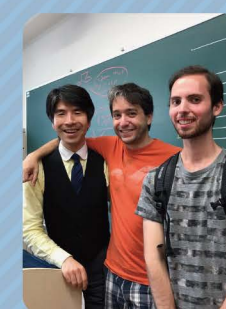
Japanese Language Course



JLP Level	Proficiency Level	Target Level (JLPT)
J1	Basic communication	
J2	Upper beginning level	JLPT N5
J3	Lower intermediate level	JLPT N4
J4	Intermediate level	JLPT N3
J5	Higher intermediate level	JLPT N2
J6	Advanced level	JLPT N1
J7	Upper advanced level	N1 or above

JLP courses are divided into seven levels, with students placed according to their placement test results. Beginner-level students from J1 to J3, study general reading and writing, listening, and conversation. As the level gets higher, students can learn various academic Japanese in order to prepare them for continued studies in Japanese higher education, employment in Japan and other such goals.

STUDENTS' VOICE



Kuhn Colin
[USA]

"Modern and Contemporary History of Japan" was an excellent ESOP course I took. I learned about Japanese history, the importance of its geographical

location, and Japan in the global spotlight. Through globalization and trade, Japan has managed to overcome many challenges through the importation of new ideas, goods, and art.



Koblizek Elena
[Austria]

Studying at Hosei University is a great opportunity to learn about interesting topics like "Japanese Rural Society"(SCOPE). This lecture provides a wide

range of information, since we learn about historical development of agriculture in Japan. During class, I really enjoy discussing rural environmental problems with Japanese as well as international students.

Student Support

Hosei University Global Education Center provides various types of support in the following areas to help exchange students to get the most out of their time as an exchange student in Japan.

Hosei University Buddy system (HUBs)

HUBs is the volunteer group of Hosei students. They form a buddy membership with exchange students to provide various support.

Japanese cultural experience

Provide opportunity to communicate with Japanese high school students and many chances to participate in the event so that students can experience Japanese culture.

Health care

Clinic and counseling support on campus, Introduction of hospitals offering English services, Attendance to a clinic.

Scholarships

Hosei University subsidizes (25,000 JPY) the monthly rent of the dormitory as a scholarship.

Student Dormitories



Dormitories are located about 40minutes by train from the University. Residents are provided with breakfast and dinner Monday-Saturdays. Students can enjoy living in the center of the Tokyo metropolitan area at an affordable cost.

Room Private room for one persons

Individual Facilities (in each room)

- Air-conditioner
- Bed
- Desk
- Chair
- Lighting (Room, Desk)
- Closet
- Bookshelf
- WI-FI
- TV-outlet

Common/Shared Facilities

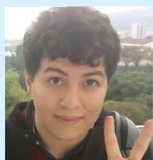
- Dining room
- Kitchen
- Bath
- Shower (24hours)
- Washing Machine
- Drying Machine
- Microwave
- Bike-parking lot
- TV

Dorm manager 24hours

Rent (per month) About ¥45,000

Former Student Impressions

Pham Jesse
(English course assistant at Japanese high school)



ESOP offers courses for both Japanese students and foreign students. Besides making amazing friendships with Hosei Students, this gives you a chance to compare cultures through discussion and get the perspective of your Japanese peers on societal issues or cultural matters. If you wish to have a career in Japan, this is important because working in Japan is a little different from being an Exchange Student. Because of ESOP I had connections in Japan and knew what to expect before I came to work here. It not only helped in job searching but also made for a smooth experience.

Khalmirzaeva Saida
(ESOP instructor in Hosei University)



The year I spent at ESOP (2004) was one of the happiest times in my life. I was given a chance to learn about Japanese culture and society through the courses offered at the program and experience the "real" Japan through outdoor activities. While enrolled in the program, I made a lot of friends from many different countries. They have become my "bridge" to the world and my new family. I went back to Uzbekistan determined to return to Hosei one day and hopefully in the near future. In 2016 I received my PhD in Literature from Hosei University, and at the moment I teach courses on Japanese literature at Hosei University (ESOP) and Aoyama Gakuin University. I am honored to have started my teaching career at ESOP and hope my work as a researcher and educator will inspire other students in our growing international community.

Welcome events



Welcome events such as parties and sporting events will be held at the beginning of the exchange program. You can make precious friends from all over the world through these events!

Cultural exchange



ESOP provides a lot of opportunities to experience "real" Japanese culture, "Tea Ceremony", "Traditional musical instruments", "Japanese Traditional Theater KABUKI".

Tokyo Big6 Baseball league



Exchange students can watch spring and fall university-league baseball games together with Hosei University students.

G-Lounge



Each Lounge provides place for the students who wish to learn about the different culture and foreign language. Exchange students have many chance to make Japanese friends and communicate with them

Culture exchange with Junior High / High School students



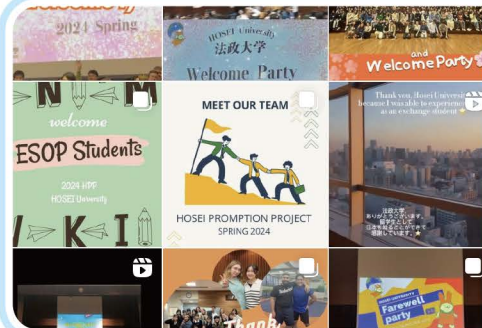
Exchange students have the opportunity to experience the cultural exchange with junior high school / high school students who have visited Hosei University from various regions and also have a chance to visit their school directly.

Club activity and university festival



Hosei University has a variety of club activities and supports international students who want to join the clubs. Many clubs take part in the university festival and international students also participate and enjoy them together.

HOSEI Promotion Project (On-campus internship)



ESOP students can participate in the Hosei Promotion Project, which aims to increase the number of international students who want to study abroad at Hosei University and in Japan by promoting Hosei University and Japan in collaboration with Hosei regular students. HOSEI Promotion Project will be an official paid on-campus internship at Hosei University.



HOSEI_ESOP_TOKYO